

## **Historic, archived document**

Do not assume content reflects current scientific knowledge, policies, or practices.



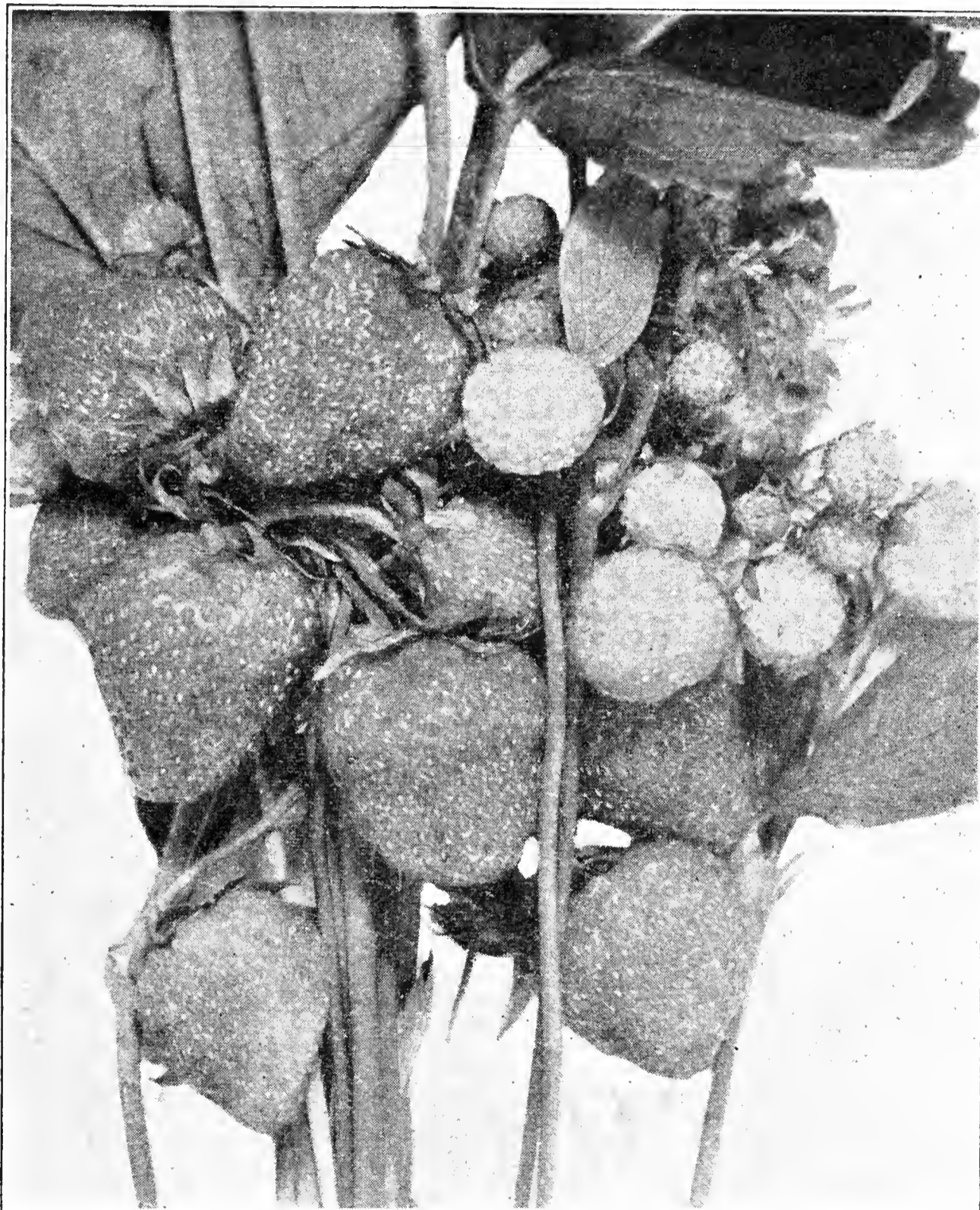
2

1939

# HART'S

## CATALOG

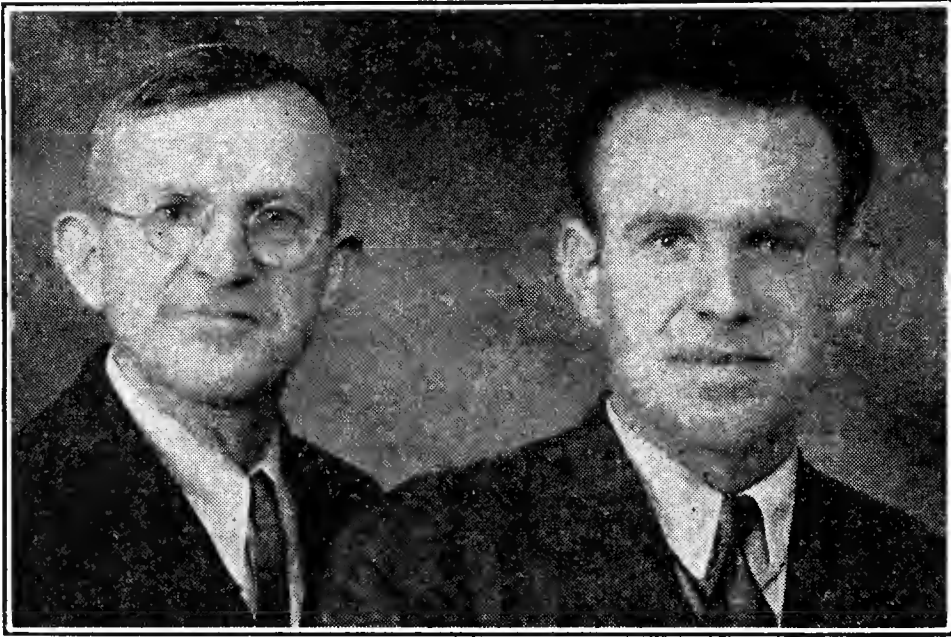
SMALL FRUIT PLANTS and  
GENERAL NURSERY STOCK



PREMIER—the Most Profitable Strawberry

—•••—

**HART'S NURSERY, Spencerville, Ind.**



CLYDE E. HART

KARL V. HART

## INTRODUCTION

We come to you again with our 1939 catalog. As you probably know we moved our nursery last year to a new location. We are now situated on New State Highway 101. This change was made for two reasons—first, our lease on the old nursery farm expired March 1, 1938; second, we were looking for a better location. We are now situated on our own farm and many new improvements are being made.

We are now in better position to give you excellent service, and trust we may have the pleasure of serving you during the coming year.

Sincerely yours,

HART'S NURSERY.

---

## LOCATION

We are now located on New State Road 101, three miles east of Spencerville, Indiana, or six miles west of Hicksville, Ohio, or nine miles south of Butler, Indiana, or ten miles north of Woodburn, Indiana.

---

## HART'S GUARANTEE

**W**E GUARANTEE every Tree, Plant, or Vine sold by us to be strong, vigorous and healthy, and to deliver them to you in good condition. If, for any reason, you are not absolutely satisfied with your stock when it is received, advise us at once, and we will gladly replace the items or refund your money. That's fair, isn't it?

---

## 1939 OUTLOOK

1938 was the greatest growing season in years. The early rains and the long growing season made trees, shrubs, plants and bulbs grow as they never grew before. Growers who buy this spring will get the best developed nursery stock they have purchased in years and better yet, at no advance in price and many items are priced less.

We are offering only those varieties of proved merit.



A Field of Our Premier Plants

## OUR BUSINESS METHOD

**I**N LOOKING at and studying catalogs for many years we are convinced that many statements made therein, are contradictory, and illustrations used, are over-drawn. We believe this is unfair to the buyer, and opposed to sound business methods.

Why lead people to believe you can make 12 to 15 hundred dollars profit from an acre of strawberries? We do not say this is impossible, but we do say it is improbable. Why not tell the buyer what he may reasonably expect if he gives his planting good care? Why say in your catalog that "Cumberland is the largest Raspberry grown," and in your description that "Logan is as large or larger than Cumberland"? This catalog was written with these thoughts in mind. You will not be misled.

We do not claim to be the largest producer of plants in this country, but when quality is considered we are willing to compare our plants with those raised anywhere.

By growing all our plants it is possible to give them our personal supervision from the time the plants are set, till dug for your order. Our plants are kept thoroughly hoed and cultivated, not a weed is permitted to grow. Every plant that goes out is fresh dug. We have pleased others—we can please you.

---

## A HINT TO FARMERS

Since strawberries are one of the first fruits to harvest in the spring and at a time when a farmer's income is lowest, many farmers could have a fine income if they chose one-half an acre and prepared the soil properly and planted it to strawberries.

The present outlook for 1940 indicates that a farmer's income will be less than any year since 1932, so this would be the opportune time to plant strawberries.

---

## ADVICE

**Now here is our advice:** Never go into a business on a big scale that you know little or nothing about. Go slowly. We would much rather sell you 100 plants and see you make a success than sell you 10,000 plants and have you make a failure.

We will be glad to advise you at any time on any matter pertaining to the raising of small fruit. Be free to write us.

## SECRETS

### Of Successful Berry Culture

We are glad to tell any one the things we have learned in growing small fruit. There is one point that has not been stressed by nursery men. Unless your ground is low, and a springy type of soil, your plants should be planted much earlier than is the usual practice. Heavy frosts will not hurt them and they will stand light freezes. A snow on newly set plants is of great benefit.

Do you have trouble getting sufficient plants to make a fruiting row? Strawberry plants are made by the mother plant making new runners. If this new plant does not make roots soon after the new leaves are formed, the under side, where the rootlets form, become woody and no roots form. If the weather is damp or rainy no difficulty will be experienced, but if it is dry a little earth should be drawn to the plant and this difficulty will be overcome. These early plants are the most valuable plants for fruiting.

Here is one question asked more often than any other: "What shall I do with the blossoms that come on my newly set plants?" Wait until about half the berries have begun to develop, then cut off the berries and remaining blossoms. You may have to go over them once more in about a week, but you will find it time well spent.

---

## THE TRUTH ABOUT STRAWBERRIES

**W**HATEVER others may say about the different varieties of strawberries we will give you our honest opinion about them. Many varieties that have been introduced in the past and advertised as superior to all others have proved to be of value to the seller of the plants only, and the buyer had only a sad experience.

We have only to recall the following varieties: Harvest King, Red Gold and Washington, to prove the above statements.

We grow only varieties of proven merit and will give you the weak as well as the strong points of each variety we sell.

---

## STRAWBERRIES

### PREMIER (Early)

**THE MOST POPULAR BERRY**—No strawberry in recent years has gained the popularity that has come to Premier. It has given more general satisfaction than any variety ever introduced—as a market berry it has outclassed all others, though not so well suited for long distance shipping as some other varieties.

When you come to earliness, size, shape, attractiveness, and quality it is hard to beat.

One essential in having a big crop of berries is to have good healthy foliage, without this no variety can produce a good crop. You will find the foliage on Premier just as green at the end of the picking season as at the beginning.

If Premier has any fault it is this: Many have difficulty in getting sufficient plants to make a wide row. They should be planted very early to overcome this difficulty.

We have a large acreage of Premier plants and you will make no mistake in planting liberally of this variety.

**PRICE:** 25 plants 25c; 100 for 75c; 1,000 for \$4.50.

We will send your strawberry plants prepaid if you enclose 10c additional for each hundred plants.

**Write for Prices on Large Lots of Plants**

## SENATOR DUNLAP (Mid-Season)

**THE DARK COLORED BERRY**—Senator Dunlap has been a household word for many years. It is referred to as "That dark red berry." It is not, however, planted so extensively as it was a few years ago, but when it comes to quality and color no other berry can equal it.

Those who wish to grow berries for use in the home can find nothing that equals Dunlap.

The fault with this variety is that it is too productive of plants and in dry weather the berries have a tendency to become small as the season advances.

The plants should be planted much farther apart than such varieties as Premier, Fairfax and Dorsett, and the rows kept narrowed down by cutting off the new plants after the row is of sufficient width.

If you have never grown strawberries try Dunlap. You can not fail with them. We have a fine stock of plants of this variety.

**PRICE:** 25 plants 25c; 100 for 60c; 1,000 for \$3.00.

## FAIRFAX (Mid-Season)

Fairfax, one of the new berries introduced by the Department of Agriculture, is meeting with considerable favor, especially in the East. The quality of the berry is fine, with healthy foliage. It is well suited for home use, but not quite firm enough for long distance shipping. Fairfax should be tested in every home garden.

**PRICE:** 25 plants 25c; 100 for 75c; 1,000 for \$4.50.

## DORSETT (Mid-Season)

This is another of the new varieties; it is a berry of high quality, healthy foliage, large in size, rather light in color and well suited for commercial growers. It is one of the heaviest producers, having yielded over 6,000 quarts per acre in the East. You should try a few of these newer varieties—they might just suit your soil and climate.

**PRICE:** 25 plants 25c; 100 for 75c; 1,000 for \$4.50.

## CATSKILL (Late)

Berries average about as large as Fairfax. Will hold their size well to the end of the picking season. Makes a fine, vigorous plant growth. Leaves are the largest we have ever seen on any Strawberry plant. Fruit stems are thick and grow upright. Berries ripen mid-season, and quality compares with Premier. It was introduced by the New York Experiment Station several years ago, and we have great hopes for it. Plants are still quite scarce and our supply is limited.

**PRICE:** 25 plants 25c; 100 for 75c; 1,000 for \$4.50.

## GEM (Everbearing)

Gem plants are usually medium to small, but make a very vigorous growth. Care should be taken to set Gem plants early and under good conditions. Once started they grow vigorously and make lots of plants. Our records for two years show Gem about as productive as Mastodon in 1936 and considerably more productive in 1937. The berries average in size, are light in color, very showy, attractive and firm enough to ship. Quality is somewhat tart but fine when sweetened. They sell for top prices.

**PRICE:** 25 plants 25c; 100 for \$1.00; 1,000 for \$6.00.

---

## RHUBARB

**MYATT'S LINNAEUS.** Large, tender variety, not stringy or tough. It has a mild sub-acid flavor. **Price:** 6 for 75c; 12 for \$1.25.

## ASPARAGUS

**MARY WASHINGTON.** Heavy rooted, rust resistant strain, grows large, tender stalks. 2 yr. roots. **PRICE:** 10 for 25c; 100 for \$1.25.

# BLACK RASPBERRIES

**HOW TO GROW THEM.** The soil should be well drained, and not too heavy. Prepare the same as for any other berry plants, and plant in early spring. Should be planted in rows 7 feet apart, and about 3 feet in the row, which requires 2,000 plants per acre. For home use and in the garden they may be planted closer. Get the roots well below the surface and cut off the old stock a few inches from the ground. When the new growth reaches a height of about 18 to 24 inches, cut off the tip, which will cause them to throw out lateral branches, and stay more upright. The following spring, before leaf growth starts, trim all lateral branches back to about 8 inches in length, and leave about four good stalks to a hill. When through fruiting, cut and burn all old fruiting canes.

## CUMBERLAND

Cumberland black Raspberries have been a standard for years in judging other black raspberries, in fact more Cumberlands are planted than all other varieties combined. They are noted for flavor, size and productiveness, and always bring top price on the market. Cumberland has never failed to produce a big crop for us but one year, and that was caused by a very late freeze, but many latent buds brought some fruit. We have sold thousands of Cumberland Raspberry plants in the past and they give perfect satisfaction because they are healthy, heavily rooted, and fresh dug. We never dig our Raspberry plants in the fall because they often become heated in storage and fail to give good results for the planter. Try them—we guarantee satisfaction.

**PRICE:** 100 for \$2.00; 1,000 for \$13.50, not prepaid.

---

# RED RASPBERRIES

## LATHAM

This variety originated in the hardy climate of Minnesota and is without doubt the most popular red raspberry grown. It is a strong, sturdy grower, healthy canes and foliage. Latham holds its shape, does not crumble, and has a most delicious flavor. Excellent for table use and jams. Those who are looking for a market berry will find Latham superior to all others. We guarantee our plants strictly true-to-name and free from disease.

**PRICE:** 100 for \$2.00; 1,000 for \$15.00, not prepaid.

---

## GOOSEBERRIES

**DOWNING.** A seeding of Houghton. Large and handsome, pale green berry; of splendid quality for dessert or cooking. Bush vigorous and exceedingly productive. Excellent for family use and profitable for market. **PRICE:** Each 20c; 6 for \$1.00; 12 for \$1.75. Prepaid

---

“Remember to visit our New Location on State Road 101.”

## CURRANTS

**PERFECTION.** The latest introduction, being a cross between Fay's Prolific and White Grape, combining the best qualities of both. Berry bright red and large. The clusters average longer and the size of berry is maintained to the end of the bunch. In quality it is said to be superior to anything in the market today, being of a rich, mild, sub-acid flavor. **PRICE:** Each 20c; 6 for \$1.00; 12 for \$1.75. Prepaid.



# DEPENDABLE NORTHERN GROWN FRUIT TREES

Why plant southern grown trees when you can get northern trees that will grow, budded from heavy bearing orchards. We are listing the best and most popular varieties. Our prices are less than half the usual prices asked by agents, because we sell direct from Nursery to you. All trees are 9/16 inch, 2-yr. old, and cannot be sent by Parcel Post. Must be sent by Express. We bud our own apple trees.

## APPLES

### Early Summer Varieties:

Transparent—yellow  
Duchess—yellow red streaked  
Wealthy—red

### Early Fall and Winter Varieties:

Red Delicious—red  
Yellow Delicious—yellow  
Jonathan—red  
Grimes Golden—yellow  
Cortland—red  
Bellflower—yellow  
Black Ben—dark red  
Winesap—red  
Northern Spy—green and red

### Late Winter:

McIntosh—red  
Ben Davis—red

## CHERRIES

**MONTMORENCY**—Late, Sour  
**EARLY RICHMOND**—Early, Sour  
**BING**—Black, Sweet

## GRAPES

**CONCORD**, The Standard Commercial Grape. The fine old popular market variety and the leading commercial grape of today. A large, purplish black grape, very hardy and productive.

**NIAGARA**, The Leading White Grape. This is the best of all White Grapes, and is very similar to Concord in habit of growth and bearing. Fruit a light amber color, with light bloom.

**PRICES:** Each 15c; 8 for \$1.00. Not Prepaid.

These grape vines are 2 years old—ready to bear fruit.

## PEACHES

**ROCHESTER**—Early  
**J. H. HALE**—Late  
**SOUTH HAVEN**—Mid-Season  
**ELBERTA**—Late

## PEARS

**BARTLETT**—Fall  
**KIEFFER**—Winter

## PLUMS

**GERMAN PRUNE**  
**YELLOW EGG**  
**BURBANK**

## Prices On Fruit Trees

Not Prepaid

2 years old

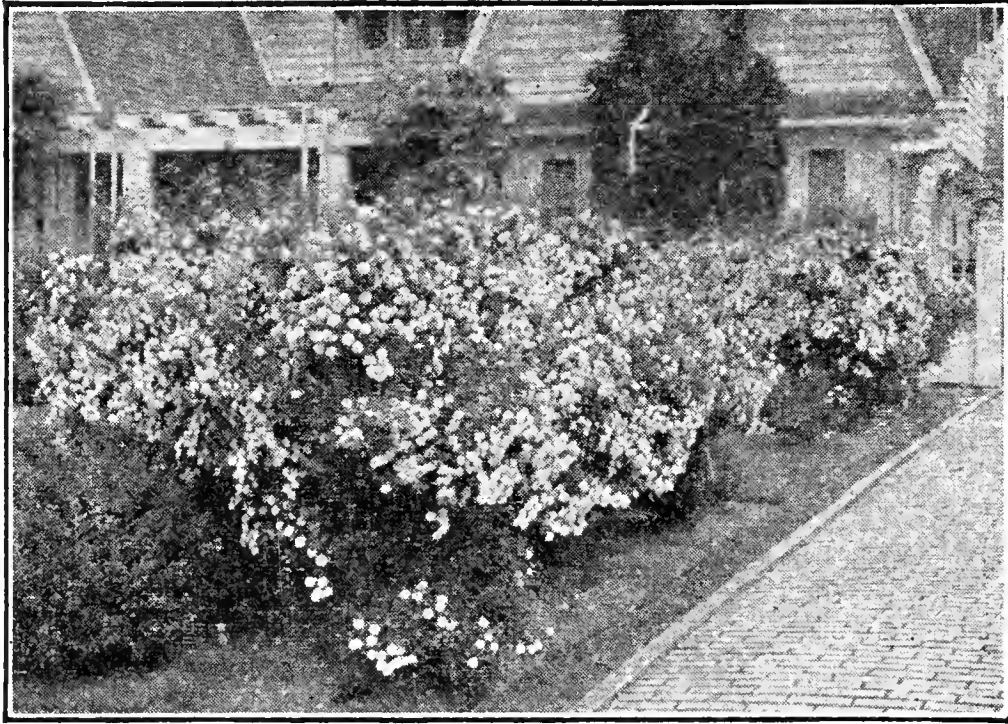
Apples	.....	each	35c; 10, \$3.00
Cherries	.....	each	65c; 10, \$6.00
Plums	.....	each	40c; 10, \$3.50
Pears	.....	each	45c; 10, \$4.00
Peach	.....	each	25c; 10, \$2.00
Apricot	.....	each	45c; 2, \$ .80

We can supply 1 yr. apple trees  
at 25c each; 10 for \$2.25.

Not Prepaid

**MOORE'S EARLY**, The Old Favorite Early Grape. Ripens about a week or ten days earlier than the Concord and is fully as good in quality. The berries and bunch are extra large, fruit is very sweet and fine flavored.

**CACO**. New, widely advertised Red Grape. Bears enormous bunches of unusually large berries of a rich wine-red and amber color. Flavor of the finest, very rich and sweet. Ripens early in September. Stock of this variety is limited. Order early.



SPIREA VAN HOUTTEI

## NORTHERN GROWN SHRUBS

Shrubs here offered are all hardy, thrifty, two-year-old stock, 18 to 24 inches high. However, we can supply either larger or smaller size. The larger size sells at somewhat higher price and the smaller much lower.

**SPIREA VAN HOUTTEI.** Finest of all the Spireas, giving a most graceful appearance when out of bloom. The flowers are pure white, and borne in dense clusters along the whole length of the branches.

**SPIREA PRUNIFOLIA.** (Old-fashioned Bridal Wreath.) Strong, irregular, growing; shining leaves coloring in autumn, and diminutive, very double, rose-like flowers borne in great abundance in April and May. Grows 6 feet tall.

**SPIREA FROBELI.** Similar to the Anthony Waterer, stronger growth. Flowers pink.

**SPIREA ANTHONY WATERER.** A dwarf variety, growing 15 to 20 inches high, covered with large heads of crimson flowers. Foliage is very handsome, being variegated with creamy white or yellow.

**SPIREA BILLIARDI.** 3 to 6 feet. Has dense spikes of rose-pink flowers that crown sparsely twigged, erect branches. For shrubbery groups, natural plantings and moist places. July to September.

### SPIREA PRICES

2 year old clumps, each 25 cents.

18-24-in. clumps, each 15 cents.

Not Prepaid

## HEDGE PLANTS

**AMOR RIVER PRIVET.** Hardest of all Privets. Foliage dark, glossy green, not subject to blight. Resistant to insect pests. Leaves retained far into the winter. White flowers followed by berries.

3 Cane, price, each 10c; 10 for 75c.

**JAPANESE BARBERRY.** The Improved Thunberg's Barberry that is entirely free from rust and may be planted in any state. A beautiful plant, whether used for group planting, shrub masses, or hedges. Foliage bright green, turning to reddish bronze in fall.

Price: 12 to 15 inch, each 15c.

**BERBERIS-BARBERRY.** (Red Japanese Barberry.) This shrub fills a long-felt want. Red Japanese Barberry may be used for shrubbery border, for clumps, or even as a specimen shrub.

PRICE: 9 to 12 inch, each 20c.

Not Prepaid.

## SHRUBS

**ALTHEA.** (Rose of Sharon)—Handsome late summer blooming shrubs, coming into bloom when few shrubs are in flower. Large showy flowers.

**BUDDLEIA.** Butterfly Bush. Will mature to full size the first year. Branches usually freeze back during the winter, but the new growth starts readily from the roots the following spring. 4 to 5 ft. high, with spikes of bluish violet flowers.

**DEUTZIA.** Pride of Rochester. Large double rose like flowers in June. It excels all other sorts in size of flowers, profusion of bloom and vigorous in habits.

**FORSYTHIA.** Golden Bell. One of the earliest shrubs to bloom in spring. Branches are covered with golden yellow flowers before leaves appear.

**HONEYSUCKLE.** Tartarian. The best of all bush Honeysuckles, upright spreading branches, bright green foliage, bright pink flowers in May and June, followed by showy red berries.

**HYDRANGEA ARBORESCENS.** Hills of Snow. The flowers are in a large way similar to the familiar "Snowball" in appearance; conspicuously white and imposing.

**HYDRANGEA.** Paniculata Grandiflora. One of the finest and most popular shrubs grown. Blooms from August until frosts, flowers in large panicles.

**KERRIA JAPONICA.** Flower, golden yellow and blooming profusely in the spring and more or less all summer. A striking flower and in the winter the slender branches are bright yellow. One of the most desirable shrubs.

**LILAC.** Persian Purple. A thrifty growing bush with slender leaves and deep purple flowers.

**MAHONIA AQUIFOLIA.** A hardy evergreen shrub having holly-like leaves. Can be used in evergreen and shrubby planting and will do well in partial shade.

**PHILADELPHUS.** Golden Leaf Mock Orange. Dwarf compact habit with bright golden leaves that are most attractive. The blossoms are white.

**SNOWBERRY.** Common Snowberry. White. Small rose colored flowers in June and July, followed by large clusters of milk white fruits, which remain far into the winter.

**SNOWBERRY, RED.** Often called Coralberry. Similar to White Snowberry but with red berries clustering in ropes along the weighted down stems. Grows 2 to 4 feet tall.

**TAMARIX AFRICANA.** Tall shrubs, 8 to 10 feet high, with fine feathery foliage and small, bright pink flowers, in slender racemes in April and May. Splendid for planting in damp or other places.

**WEIGELA FLORIBUNDA.** A beautiful, comparatively new shrub, with large, showy red flowers appearing in profuse clusters and almost hiding the glossy green leaves. Commences blooming early in spring, and continues all summer.

**WEIGELA EVA RATHKE.** A charming new variety, reaching a height of 3 to 4 feet. Flowers are a brilliant crimson.

**PRICE:** 2 yr. old Clumps, each 25c;  
18-24 in., Each 20c; 3 for 50c.  
Not Prepaid.

---

## SHADE TREES

**SILVER MAPLE**—5 to 6 ft., 50c; 2 to 3 ft., 25c each.

**HARD MAPLE**—5 to 7 ft., each 50c, 3 for \$1.00; 2 to 3 ft., each 25c, 6 for \$1.00.

**BOX ELDER**—5 to 7 ft., each 50c, 3 for \$1.00.

**CHINESE ELM**—4 to 5 ft., each 75c; 2 to 3 ft., each 25c.

**AMERICAN ELM**—2 to 3 ft., 15c each.

Not Prepaid.

## EVERGREENS

Evergreens have become very popular in the last few years in landscape plantings. The dark green foliage contrasts well with winter surroundings.

Those who cannot afford plantings which give an immediate effect can plant smaller size evergreens which will make fine growth in two or three years. We would be glad to give suggestions for evergreen plantings.

### JUNIPER

**PFITZER'S JUNIPER.** The most popular of all spreading Evergreens. Its peculiarly graceful, distinctive manner, plus an unusually hardy nature, makes it particularly fascinating and desirable for foundation planting.

**PRICE:** 18 to 24 inch, \$1.50.

**SABINA.** A type similar to Pfitzer, but growing not quite so rank, but intending to be more vase shape, with the color of the foliage a darker green.

**PRICE:** 18 to 24 inch, \$1.50.

**HORIZONTALIS.** A handsome servicable ground cover. The foliage quite thick and threadlike, with a fresh gray green color. Also very useful in rock garden work.

**PRICE:** 18 to 24 inch, \$1.50.

**IRISH:** Erect, slender and formal in habit, with sage green foliage, very compact making a splendid column. A very good substitute for Pyramid Arbor Vitae.

**PRICE:** 18 to 24 inch, \$1.50.

**EXCELSA.** *Stricta*, Spiny Greek Juniper. A very dense and dwarf variety with beautiful blue green color. Cone shaped, slow growing and very useful in borders and foundation plantings.

**PRICE:** 12 to 15 inch, \$1.25.

Electric current is now so general it is possible to have an electrically lighted tree at Christmas time. We can supply fine trees for this purpose at \$1.00 each.

### ARBO VITA

**PYRAMIDALIS.** A very dense columnar type, with dark green foliage, probably the most compact and erect of all the Arbor Vitae. The most popular upright evergreen for planting on either side of an entrance, or very correctly used as accent points, such as corners and pillars.

**PRICE:** 2 to 3 feet, \$1.50.

**GLOBOSA.** Forms a dense low natural

globe. Fine for planting in the foreground of a foundation planting. Always a dwarf and never requires trimming to maintain its smooth round shape.

**PRICE** 15 to 18 inch, \$1.00.

### SPRUCE

**NORWAY SPRUCE.** The original and most popular Christmas tree of this section. A lofty tree at maturity with branches evenly spaced and making the tree well rounded and always a specimen. Very popular and effective in groups and one of the best for hedges. It is dark green in color, except the new growth in spring, which is a silvery blue, and is very showy against the older darker needles.

**PRICE:** 12 to 15 in., 50c; 2 to 3 ft., \$1.00.

**BLACK HILLS.** Very slow in growing and very bushy in type, retaining this form at maturity when it often reaches forty feet. Very dense, and the foliage is bright green.

**PRICE:** 24 to 30 inch, \$1.60.

**COLORADO BLUE.** A selected strain of the Colorado which is steel blue in color. Dense evenly branched specimens and is probably the showiest and most impressive of all the evergreens.

**PRICE:** 12 to 15 inch, \$1.00.

**MUGHO PINE.** The only dwarf pine. Leaves short, stiff, and very formal. Branches short and very close to each other, giving the appearance of a solid mass of dark rich green. Grows spreading usually assuming a globular form. Used in foreground of plantings and for accent points.

**PRICE:** 12 to 15 inch, \$1.00.

**SCOTCH.** Very valuable for screen planting because of its fast vigorous growth. Usually grows taller than the Austrian pine and shows a little reddish brown in its bark and cones.

**PRICE:** 12 to 15 inch, 75 cents.

Evergreen Trees Not Prepaid.



## SPECIAL!

### EVERGREEN PLANTING

- 1 COLORADO BLUE SPRUCE
- 2 MUGHO PINE
- 2 IRISH JUNIPER
- 1 PFITZER JUNIPER

All 12 inches tall

For Only

**\$1.50**

## R O S E S

### Hardy Climbing Roses

**CRIMSON RAMBLER.** Very hardy. Blooms are of fiery red color and in clusters the whole length of the vine.

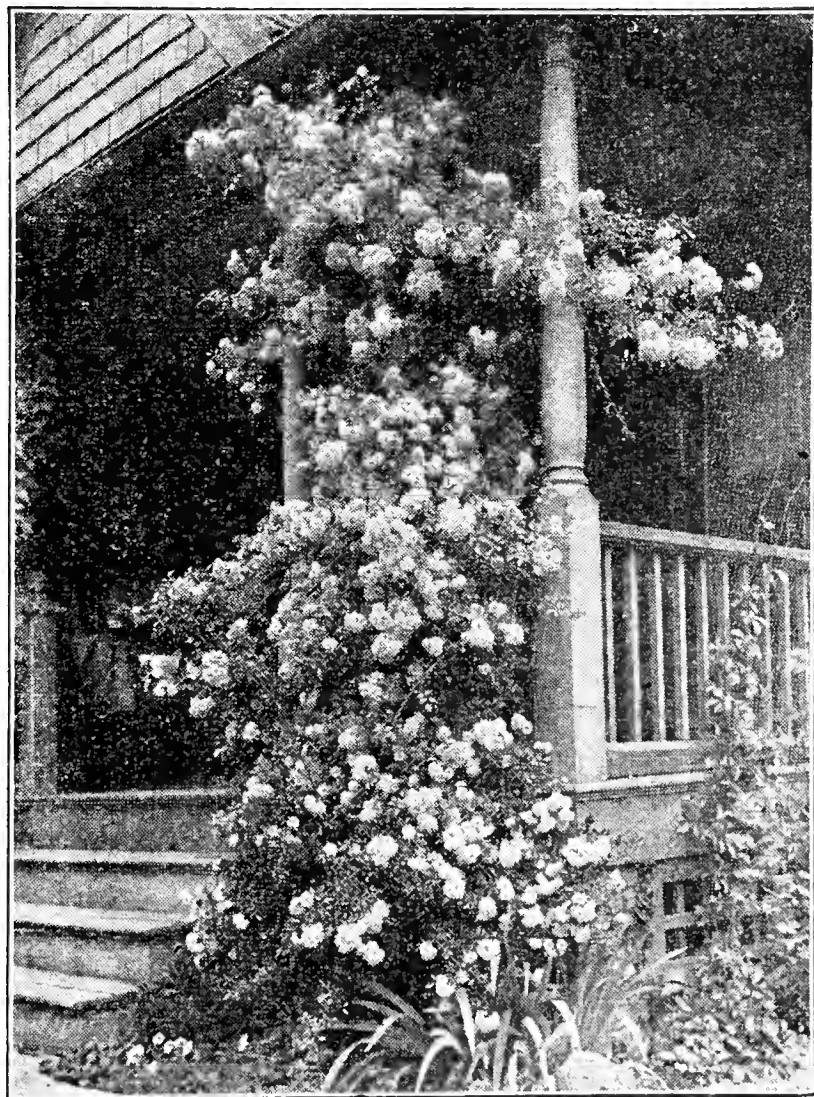
**DOROTHY PERKINS.** Pink. The best pink and a profuse bloomer. Double and sweet scented.

### Hybrid Perpetual Bush

**PAUL NEYRON.** Peony rose. The largest rose of all. Blossoms of clear pink shading to rose. Plant erect, strong and heavy grower, blooming repeatedly.

**FRAU KARL DRUSCHKI.** Very large; perfect form and snow white; vigorous grower, a free bloomer.

**AMERICAN BEAUTY.** H. T. Deep pink, approaching crimson color. Exquisite form and fragrance, large blossoms. A prize winner.



**PRICE of Above Roses, Each 30c; 5 for \$1.25. Not Prepaid.**

## HART'S HEALTHY GLADIOLUS BULBS

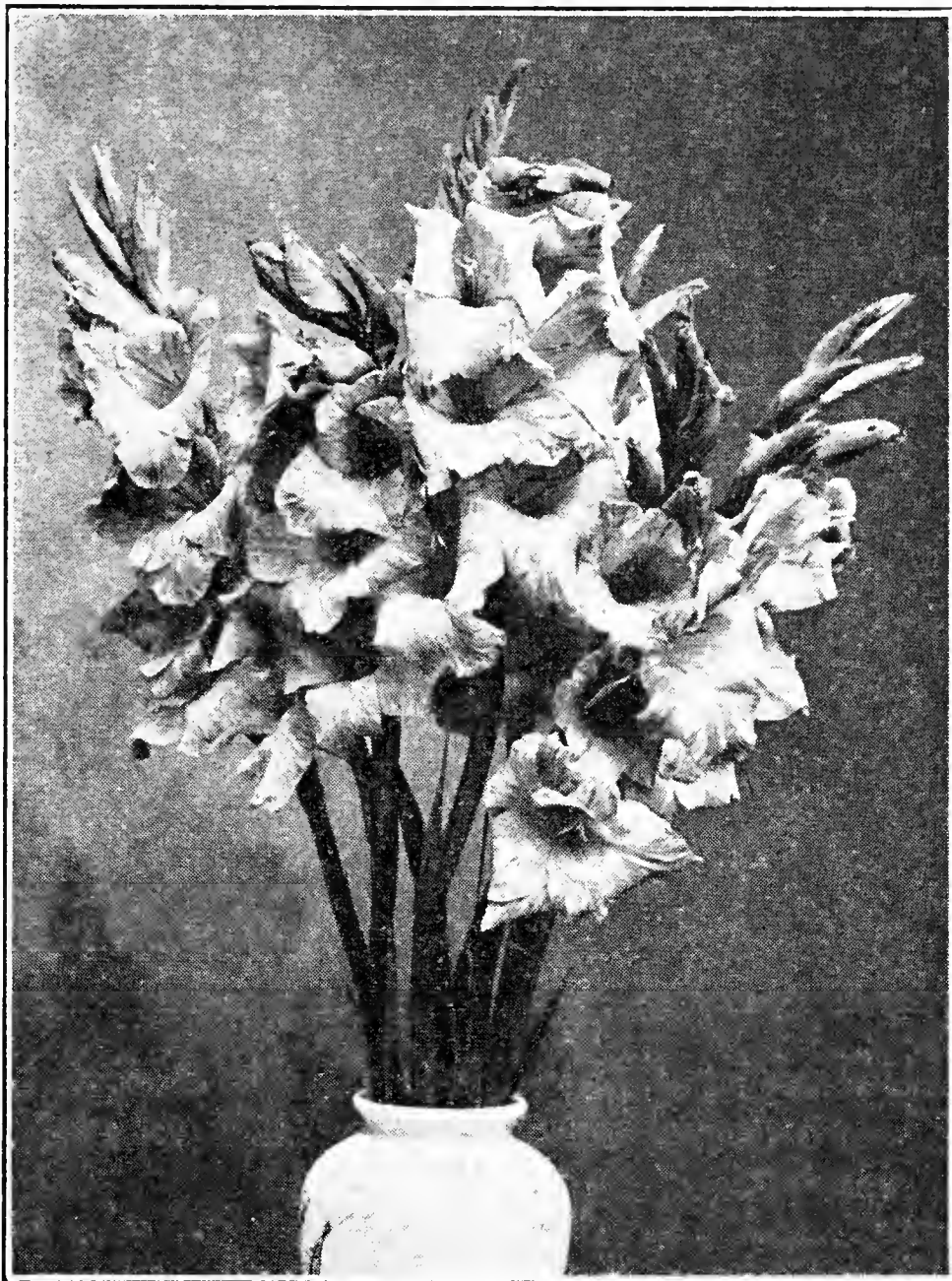
Hart's famous Gladiolus are grown and admired wherever beautiful flowers are known. They make attractive displays in the garden, planted either in beds or in groups here and there in the perennial or annual border. They are ideal for house decoration. If the spikes are cut when the bottom flower shows color, all the buds, clear to the top, will open. Gladiolus are easily grown in any good well-drained soil.

(All priced per dozen, Prepaid)

	Large	Medium	Small
ALBANIA—White	25c	20c	15c
ALICE TIPLADY—Orange	25c	20c	15c
AMERICA—Shell pink	25c	20c	15c
AVE MARIE—Blue	50c	40c	30c
BAGDAD—Smoky old rose	35c	25c	20c
BETTY NUTHALL—Salmon orange throat	35c	25c	20c
BOB WHITE—White	50c	40c	30c
BUTTERBOY—Light yellow	25c	20c	15c
CAPT. BOYNTON—Lavender	35c	25c	20c
CHAS. DICKENS—Purple	35c	25c	20c
DREAM O' BEAUTY—Rose	50c	40c	30c
DR. F. E. BENNETT—Scarlet	25c	20c	15c
EXCELLENCE—Scarlet	35c	25c	20c
E. J. SHAYLOR—Orange red	25c	20c	15c
FRANCIS KING—Orange red	25c	20c	15c
GIANT NYMPH—Pink	25c	20c	15c
GLADDIE BOY—Orange	35c	25c	20c
GLORIANA—Golden Salmon	25c	20c	15c
GOLD EAGLE—Yellow	25c	20c	15c
GOLDEN DREAM—Deep yellow	25c	20c	15c
GOLDEN SWALLOW—Light yellow	35c	25c	20c
HARBINGER—Orange red	25c	20c	15c
JOERG'S WHITE—White	25c	20c	15c
JOHN TOLAND—Deep orange	25c	20c	15c
LE MARSCHEL FOCH—Shell pink	25c	20c	15c
LIGHTS OF GOLD—Salmon pink	35c	25c	20c
LOS ANGELES—Salmon pink	25c	20c	15c
MARMORA—Smoky Grey	35c	25c	20c
MORAVIAN—Light lavender	25c	20c	15c
MRS. F. C. PETERS—Rose-lavender	35c	25c	20c
MR. W. H. PHIPPS—La France pink	35c	25c	20c
NANCY HANKS—Deep orange	25c	20c	15c
ORANGE QUEEN—Copper orange	25c	20c	15c
PICARDY—Salmon pink	35c	25c	20c
PRIDE OF WANAKA—Purple	25c	20c	15c
QUEEN OF BREMEN—Lavender pink	25c	20c	15c
ROSE MIST—Rose	25c	20c	15c
SUNSHINE GIRL—Salmon pink	35c	25c	20c
WASAGA—Buff	35c	25c	20c
MIXED—All good varieties	20c	15c	10c

Six bulbs sold at one-half the dozen price.

If you are in the market for large quantities of Gladiolus bulbs write us for special prices.



## HART'S BLUE RIBBON COLLECTION

12 Prize-Winner Gladiolus Bulbs, 50c, Postpaid.

We offer one bulb each of the following beautiful gladiolus, each properly wrapped and labeled, for 50c, postpaid.

These are all outstanding varieties and the cream of our entire list. All varieties are blue ribbon winners.

AVE MARIE—Blue  
 BETTY NUTHALL—Salmon  
 DREAM O' BEAUTY—Rose  
 GIANT NYMPH—Pink  
 MARSCHEL FOCH—Shell Pink  
 PICARDY—Salmon Pink

BAGDAD—Smoky Old Rose  
 BOB WHITE—White  
 DR. F. E. BENNETT—Scarlet  
 GOLD DREAM—Yellow  
 W. H. PHIPPS—Pink  
 QUEEN OF BREMEN—Lavender

---

## DAHLIAS

We have a large variety of Dahlias to offer this year at a very reasonable price. Last year was an exceptionally good year for the development of tubers.

### LARGE FLOWERING VARIETIES

Jane Cowl, glistening bronze buff  
 Mrs. Ide Ver Warner, orchid pink  
 World's Fair, Lavender

### SMALL FLOWERING VARIETIES

A. D. La Von, Shell pink  
 Snow Clad, White  
 Little Herman, Red and varigated

PRICE: 10c each

One Bulb of Each of the 6 Named Varieties Listed Above—50c, Prepaid.

# Instructions to Customers

It has always been our desire to give every customer prompt, efficient service and you can aid us greatly in doing this if you will exercise care and accuracy in making out your order.

Our ideal location and soil enable us to start digging and shipping a week to ten days earlier than most northern nurseries. There are no storage cellars on our farms. All stock is fresh dug as needed.

**WHEN TO ORDER**—As there may be a shortage of the particular varieties you want it is best to make up your order and send it in as quickly as possible. Stock will then be reserved and shipped at specified time. Strawberry and Raspberry plants are a short crop in many localities this year and for your own protection this stock should be ordered early.

**HOW TO ORDER**—An order blank is provided with each catalog. However, any ordinary writing paper will do. In order to save unnecessary correspondence, always give complete name and full address, shipping point, etc.

**TERMS OF PAYMENT**—Our low prices for high quality stock are for cash only. Please do not request C. O. D. shipments. We will book early orders with a cash payment to show good faith, and balance may be remitted before shipment is wanted.

**REMITTANCE**—The safest way to remit is by postal or express money orders. Cash may be sent in registered letters and personal checks will be accepted if carefully made out. Please do not send stamps.

**OUR REFERENCES**—Farmers & Merchants State Bank, Spencerville, Ind., the Post Master, Express Agent, or any business house in Spencerville, Ind.

**SHIPPING SEASONS**—Spring shipping season usually begins in March and continues until June.

**HOW TO SHIP**—Large tree and cane plant orders can be shipped safely early in the spring by freight. Order shipment in March and trench or heel in the stock until you are ready to plant. For Strawberry plants and small orders of other stock, express or parcel post shipment is necessary. If not particular, tell us to ship "cheapest way."

**SAFE ARRIVAL GUARANTEED**—All stock guaranteed to reach you in perfect condition, as we use plenty of damp moss, waterproof paper and strong, wire-bound crates and boxes.

**IN CASE OF ERROR**—We are not satisfied until you are. As soon as stock arrives check it over carefully and in case of error notify us immediately and same will be corrected.

**NUMBER OF PLANTS PER ACRE**

The following table shows the distances we recommend for planting different fruits:

	Distance between rows	Distance apart row	No. plants per acre
Strawberries	3½ ft	1½ ft.	8,000
Raspberries	7 ft.	3 ft.	2,000
Blackberries	7 ft.	4 ft.	1,550
Grapes	10 ft.	8 ft.	550

## SPECIAL OFFER!

The four varieties of strawberries listed below are all the newer introductions and are all worthy of a trial by everyone in the northern part of the United States. To make it easy for everyone to try them we are making this unusual offer. Pin a dollar bill to the coupon below, write your name and address on it, and mail to us; and we will send you 25 of each variety, 100 plants in all and will include, as long as they last, 12 Queen of Bremen Gladiolus, advertised on page 12, and better yet, we will post pay them to your door, and if you are not satisfied when you receive them, return them to us and we will refund your money.

**COUPON**

Send me 25 Dorsett, 25 Fairfax, 25 Catskill, 25 Cheaspeake Strawberry Plants and 12 Queen of Bremen Gladiolus Bulbs, described on page 12.

NAME .....

ADDRESS .....





# From **HART'S NURSERY**

**Spencerville, Indiana**

(Sec. 562 P. L. & R.)

## \$1.00 BARGAINS

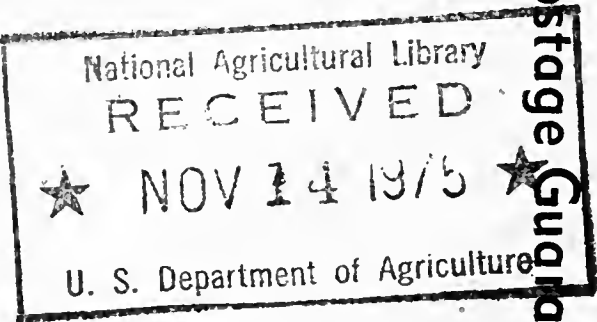
Your Choice for Only \$1.00  
Postpaid to Your Door.

### ORDER BY NUMBER AND NAME

- | No.   | Name                             |
|-------|----------------------------------|
| 1—250 | Dunlap Strawberry Plants         |
| 2—50  | Asparagus Roots, 2 years old     |
| 3—3   | Gooseberry and 3 Currant Bushes  |
| 4—10  | Norway Spruce Trees, 2 years old |
| 5—10  | Spirea Van Houttei, 2 years old  |
| 6—5   | Forsythia, 2 years old           |
| 7—10  | Concord Grape Vines, 2 years old |
| 8—120 | Glad Bulbs, Mixed Colors, No. 2  |
| 9—20  | Silver Maple, 2 years old        |

See the unusual \$1.00 Bargain on Page 14

Return Postage **Guaranteed**



**To**

**NAME**

*Myron W. Hart, Field Station*

**R. R. or St.**

*Box 1250*

**Postoffice**

*Spencerville*

**State**

*Ind.*